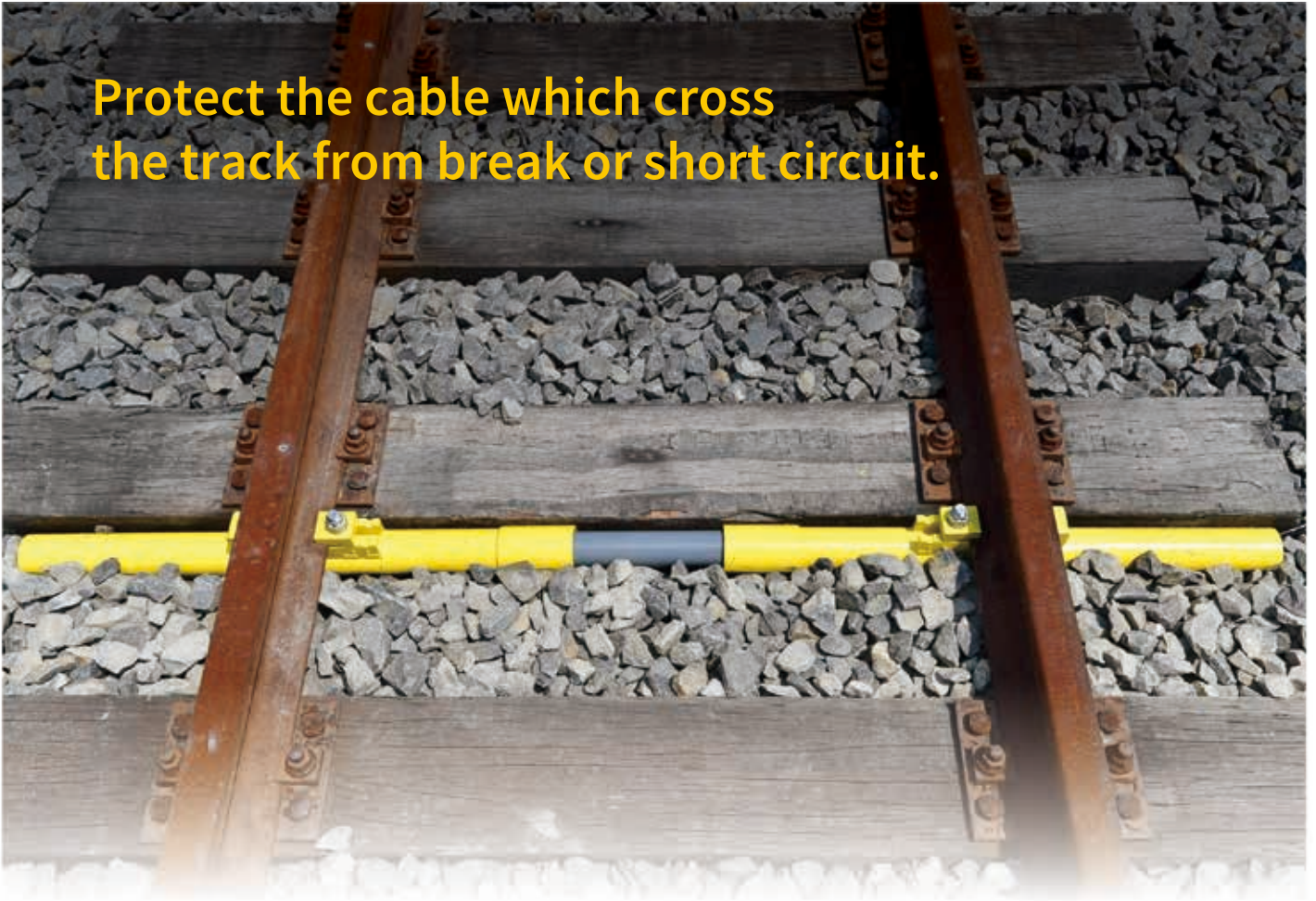


# Cable Protection Pipe

Protect the cable which cross the track from break or short circuit.



⌞ No sleeper replacement needed

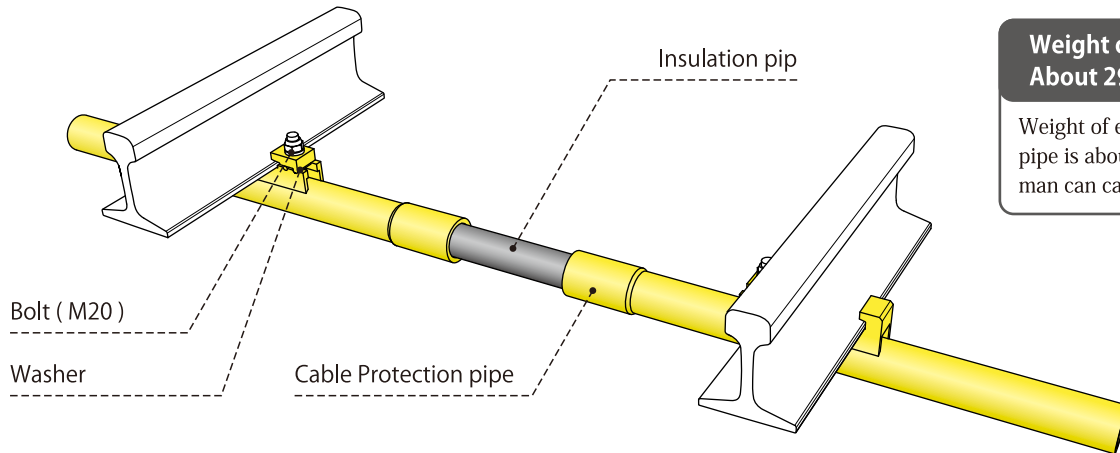
⌞ Light weight & easy installation

⌞ No worry of short circuit of the track



## Installation procedure and precaution.

### Parts structure

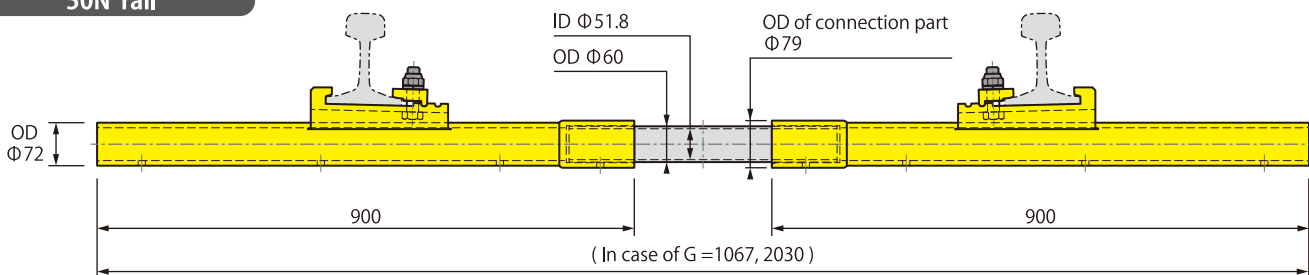


**Weight of the products :**  
About 29 kg/set

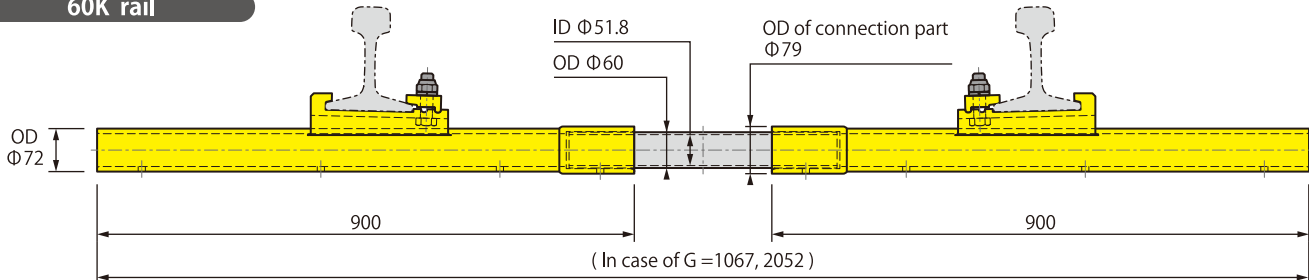
Weight of each cable protection pipe is about 13 kg and the one man can carry the pipe.

### Installation drawing ( In Japan )

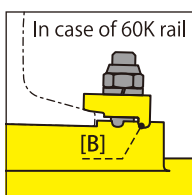
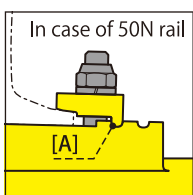
#### 50N rail



#### 60K rail



#### Details of washer part



Please put on the salient of washer in groove A for 50N, groove B for 60K and fasten the bolts.

#### NOTICE

Please note this pipe can be applied to various type of rails. Please consult with us with the information of type of rail and track gauge.

Total manufacturer of safety equipment for railways

**Hayashi Soji Corporation**

5-12-14 Omori Higashi, Ota, Tokyo 143-0012

Phone : +81-3-3762-8451 FAX : +81-3-3762-8454 (JR) 057-3344

<http://www.hayashisoji.com/> e-mail: [info@hayashisoji.com](mailto:info@hayashisoji.com)