

Examples of installation to sleeper

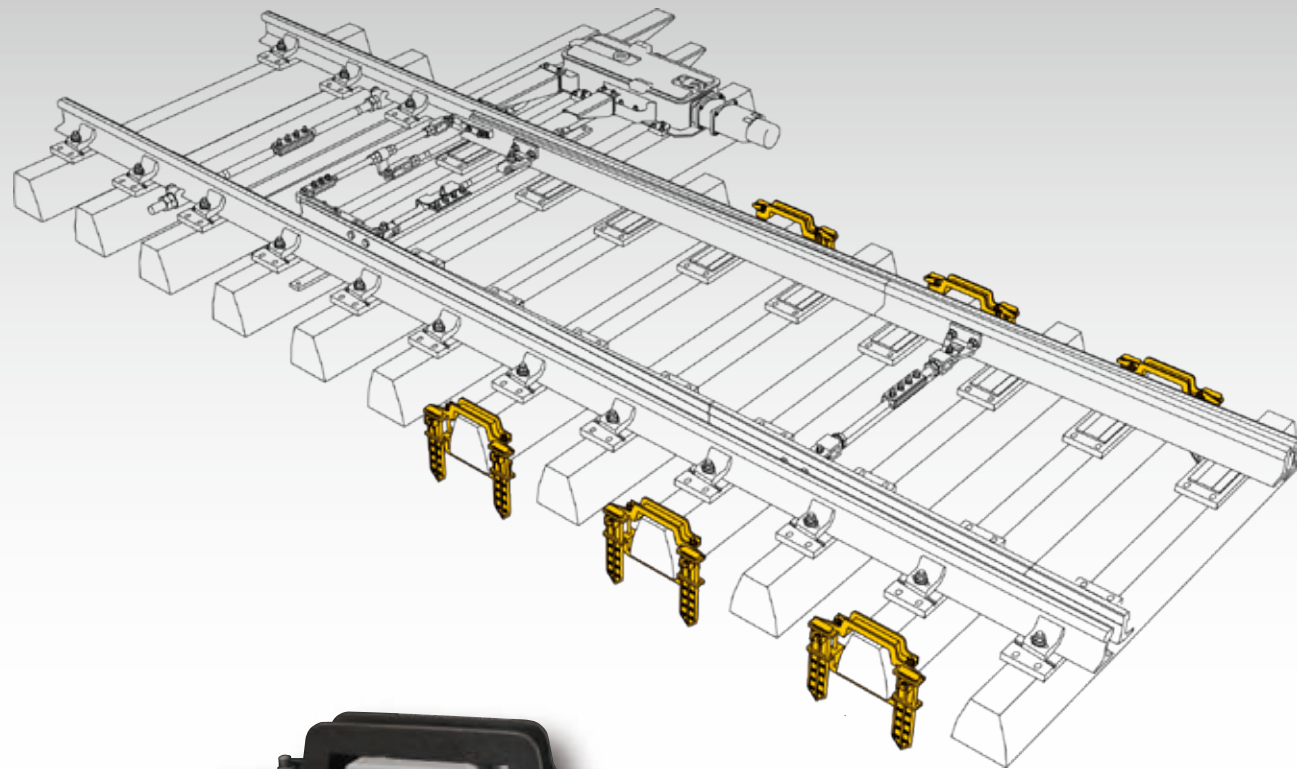
South Africa model

Johannesburg, Durban, Capetown

Easy installation

Long life duration

Best solution to increase lateral resistance of track
and to improve the track maintenance



Drive-in type



[For sleeper end face]

Drive-in piles

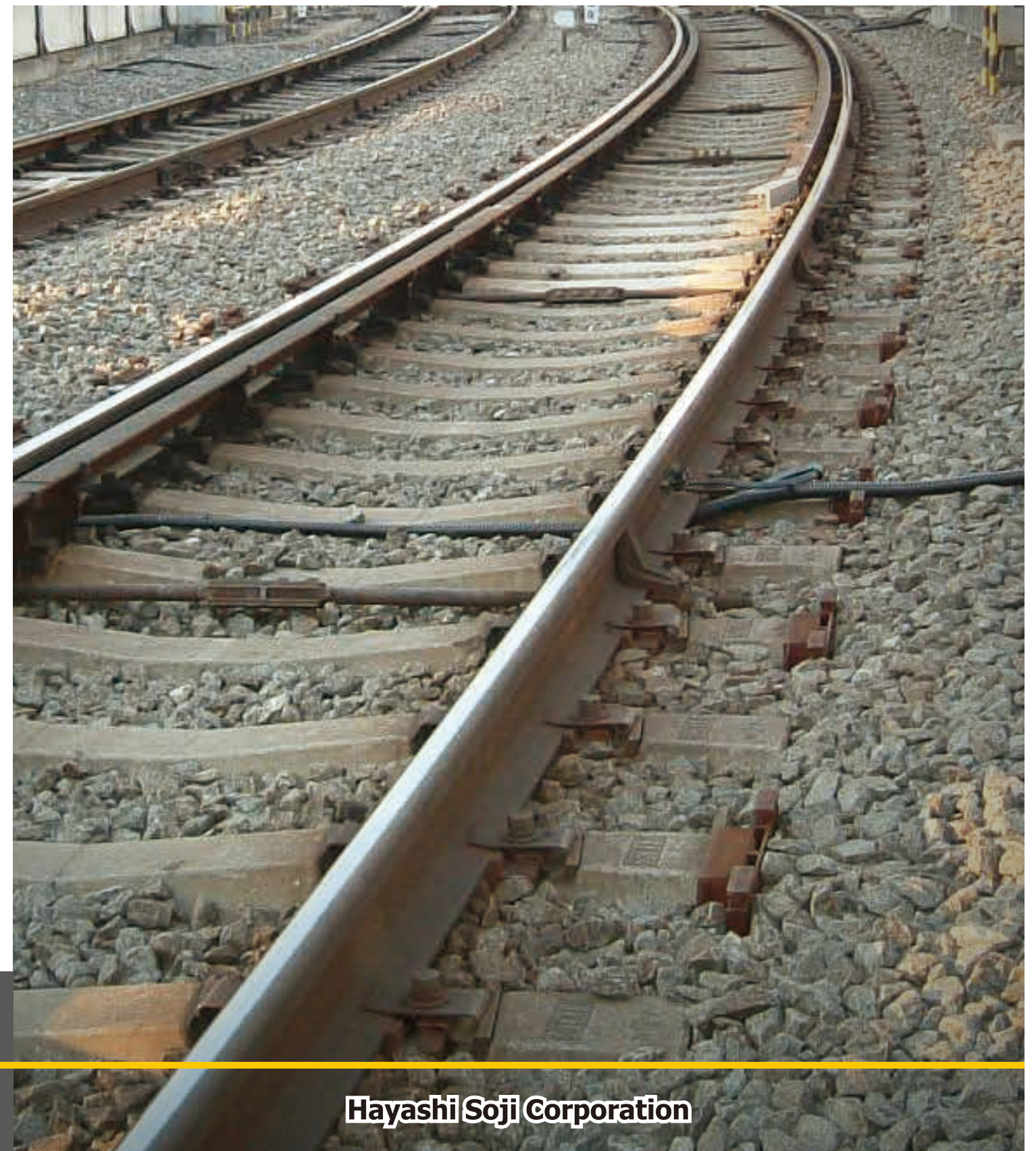


There are three types of
drive-in piles, with lengths
of 310, 410, and 510mm.

Track Maintenance and Safety Equipment

Sleeper Anchor General Catalog

PAT. 4512661



Total manufacturer of safety equipment for railways

Hayashi Soji Corporation

5-12-14 Omori Higashi, Ota, Tokyo 143-0012

Phone : +81-3-3762-8451 FAX : +81-3-3762-8454 (JR) 057-3344

<http://www.hayashisoji.com/> e-mail: info@hayashisoji.com

Recipient of the Ministry of Economy, Trade and Industry's 300 Vibrant Small- and Medium-Sized Manufacturers award

Recipient of the City of Ota's Excellent Factory and Overall Achievement award

CS010-1909

Hayashi Soji Corporation

Heavy-duty cast iron sleeper anchors help assure long-term track safety

Sleeper anchors attach to the end faces or center of the sleepers, preventing buckling through enhanced resistance to lateral force. They are particularly effective at both inner and outer turnouts, at combating thermal expansion and contraction , or along curved sections of track.

Sleeper anchors are available in four different types, suitable for a variety of railway configurations. Select the characteristics best suited for your application.

Made of FCD450 ductile cast iron, Hayashi sleeper anchors are durable and reusable.

Ductile cast iron noted for being pressure and corrosion-resistant, shows little deterioration during long-term use, and is reusable, as well.

No interference with multiple tie tamping

Multi-tie tamping can be performed with anchors in place.

Maintains secure lateral-thrust resistance

Lateral-thrust resistance is maintained over the long term thanks to a bolted structure that anchors the sleeper securely.

Standard type

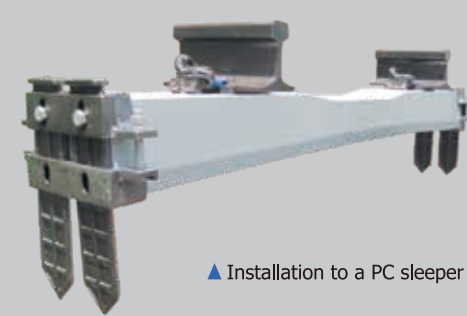
- Creeping stoppers included as standard equipment (detachable)
- Suitable for PC, synthetic, or wooden sleepers
- Also available in a variety of sizes and configurations suitable for specialized sleepers



▲ Installation to a PC sleeper

Drive-in type

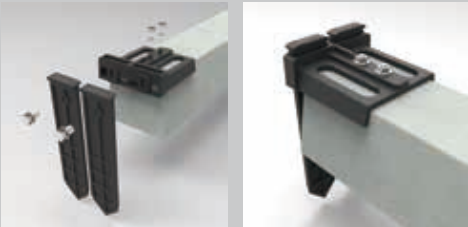
- Available with pile lengths of 310, 410, and 510mm
- Suitable for PC, synthetic, or wooden sleepers
- Also available in a variety of sizes and configurations suitable for specialized sleepers



▲ Installation to a PC sleeper

Easy installation type

- Available with pile lengths of 310, 410, and 510mm
- Suitable for PC, synthetic, or wooden sleepers
- Also available in a variety of sizes and configurations suitable for specialized sleepers



Standard type

[Installs to end face or center of sleeper]



Installation without creeping stopper



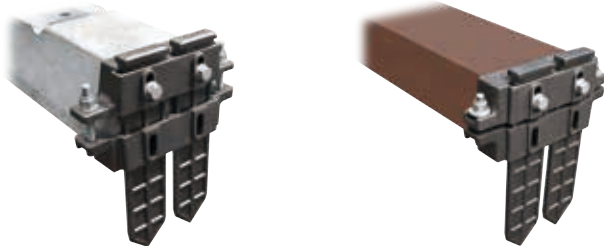
Installation with creeping stopper



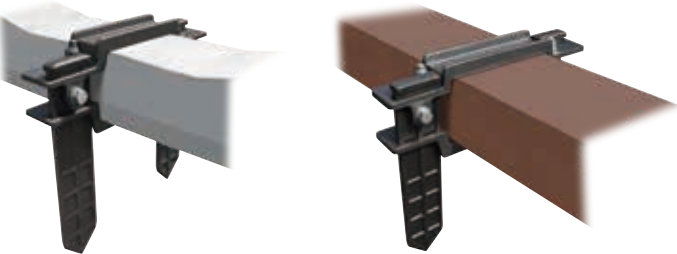
Installation on pre-stressed concrete, synthetic, or wooden sleepers are possible. In addition, installation for special sleeper sizes are also possible.

Drive-in type

[For sleeper end face]



[For sleeper center]



Easy installation type



It will be possible to install without digging up ballast. (For PC, synthetic, and wooden sleepers)

Drive-in type for oversized sleepers

[Drive-in type]

Standard type includes two piles. (Identical pile lengths available for center.)



[Full type]

For locations requiring significantly large resistance to lateral thrust, may be installed with two additional piles.



* Full-type anchors available for sleeper end faces only.



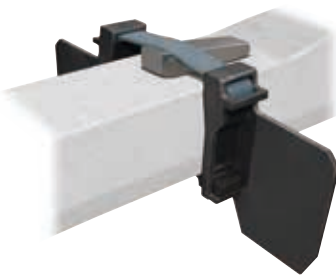
Drive-in piles

There are three types of drive-in piles, with lengths of 310, 410, and 510mm.

[For expansion joint sleepers]



Bolt-less type



Available for any size of sleeper by changing the front and back of lower plate.

